

BLUE ASH Fire/EMS

Engaging with your local Fire
Department



Bio



- 14 years Fire/EMS
- 5 years City of Blue Ash FD
- Assigned to St.13 U3

LT. Patrick Pyles





February 23, 2024



- 22 years Fire/EMS
- 10 City of Blue Ash
- Assigned to Division of Life Safety Admin

**Fire Marshal
Waxman**



A little about the Fire Service

- Shift work 24/48
- Away from our families 1/3rd of our lives
- 2nd home and family
- We do everything together
- See stuff nobody should ever see
- We do a lot outside of making calls... (Training, hydrants, preplans, public education, public relations, everyone has AOR's, oh yeah and making calls...
- We all love it and wouldn't change it for the world

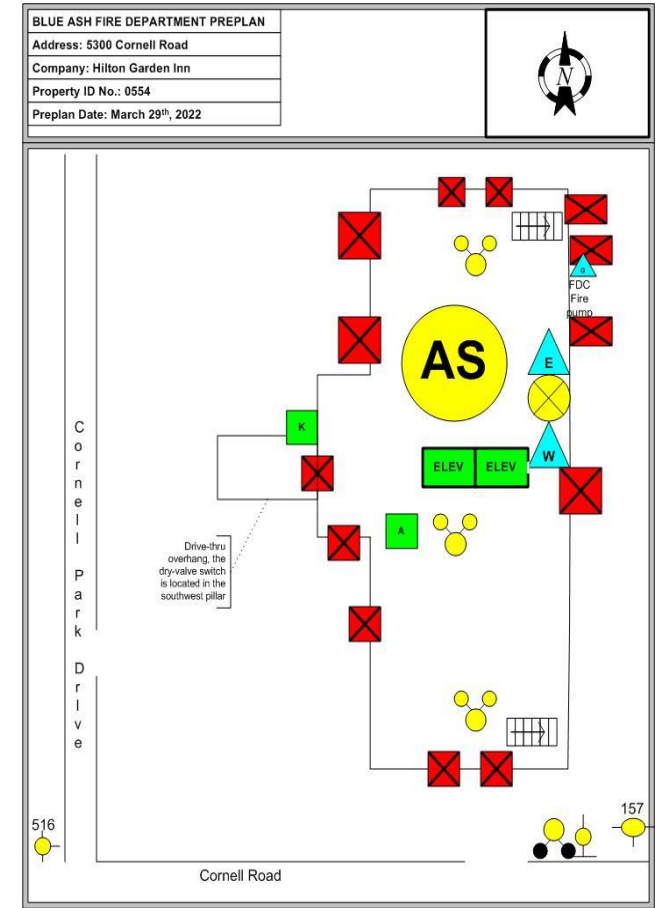
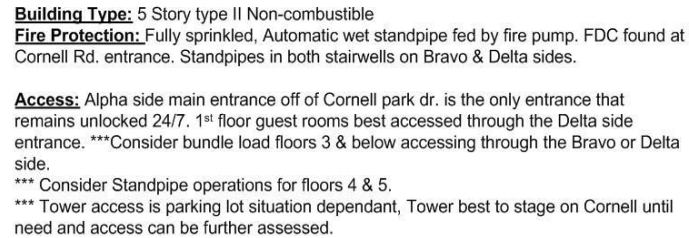


Where does it begin? With you!

- What's the address of your building?
- Where's your closest exit?
- Who's responsible for onsite safety?
- Pull Stations? Fire Extinguisher locations? Systems location?
(Utilities/Alarms/Sprinklers/Equipment shutoffs)
- What's the best access for the area you work?
- What's the hazards at your workplace?
- Where do you go in an emergency? Who's responsible for accountability?



- **Inspections**
- **Walkthroughs**
- **Tactical Planning**
- **Updates (Keys/Contacts)**



911 System

- Information relay
- Be descriptive
- Be specific
- Remain on the line if possible
- Can provide over the phone instructions



Our Arrival

- Where's the problem?
- Is everyone out/ok?
- Where's the best access?
- Specific hazards/Equipment? (SME/Safety/Maintenance)
- Fire Safety Features (Alarm panel/Risers)



After an Emergency?

- Did things go well? If not, talk about it!
- What can we do better?
- Learn from mistakes!
- Open to feedback and planning



What can I do to help?

- Be advocates of information
- Safety education CPR/AED/Fire Extinguisher
- Get with your local Department during inspections and pre plans
- Clearly marked address and entry points
- Know where hazards and shutoffs are located and assure they are properly labeled
- Practice fire drills/evacuation plans/safety trainings/face sheets



LEARN HOW TO SAVE A LIFE!

JOIN THE BLUE ASH FIRE DEPARTMENT FOR CPR/AED CLASSES

When: 8a-12p, 2nd Saturday of every month

Where: North Fire Station, 10647 Kenwood Rd.

Cost: \$25

*Call: **513.745.8533** to reserve your spot!*



MORE INFO: [BLUEASH.COM](https://www.blueash.com)



February 23, 2024

Requirements for Fire Evacuation Plans

		Complete	Incomplete
1.)	Identification of emergency egress or escape routes.		
2.)	Where applicable, directions for movement to areas of refuge		
3.)	Where required procedures for any employee that must operate critical equipment before evacuating.		
4.)	Procedures for assisted rescue for persons unable to use the general means of egress unassisted.		
5.)	Procedures for accounting for employees and occupants after evacuation has been completed.		
6.)	Where applicable, identification and assignment of personnel responsible for rescue or emergency medical aid.		
7.)	Primary and alternate means of notifying occupants of a fire or emergency.		
8.)	Primary and alternate means of notifying the fire department and any internal response groups.		
9.)	Identification and assignment of personnel who can be contacted for further information or explanation of duties under the plan.		
10.)	Description of emergency voice/alarm communications where the alarm system uses different alerts.		

	*These additional four descriptions for nursing care facilities		
1.)	Procedures for evacuating patients with needs for containment or restraint and post-evacuation containment, where present.		
2.)	A written plan for maintenance of the means of egress.		
3.)	Procedure for defend-in-place strategy		
4.)	Procedures for full-floor or bldg evacuation, where applicable.		



Requirements for Fire Safety Plans

		Complete	Incomplete
1.)	Procedures for reporting fires or other emergencies.		
2.)	Procedures for notifying occupants		
3.)	Procedures to address occupants in need of evacuation assistance.		
4.)	Procedures for accounting for employees and occupants after evacuation has been completed.		
5.)	Plans identifying; exits, primary & secondary evacuation routes, manual fire alarm boxes, fire extinguishers, and assembly point.		
6.)	Documentation of any known fire hazards		
7.)	Responsible parties for equipment installed to prevent or control fires including suppression, safety cans, sheilding, sensors, etc.		
8.)	Respponsible parties for maintenance, housekeeping and controlling fuel hazard sources.		

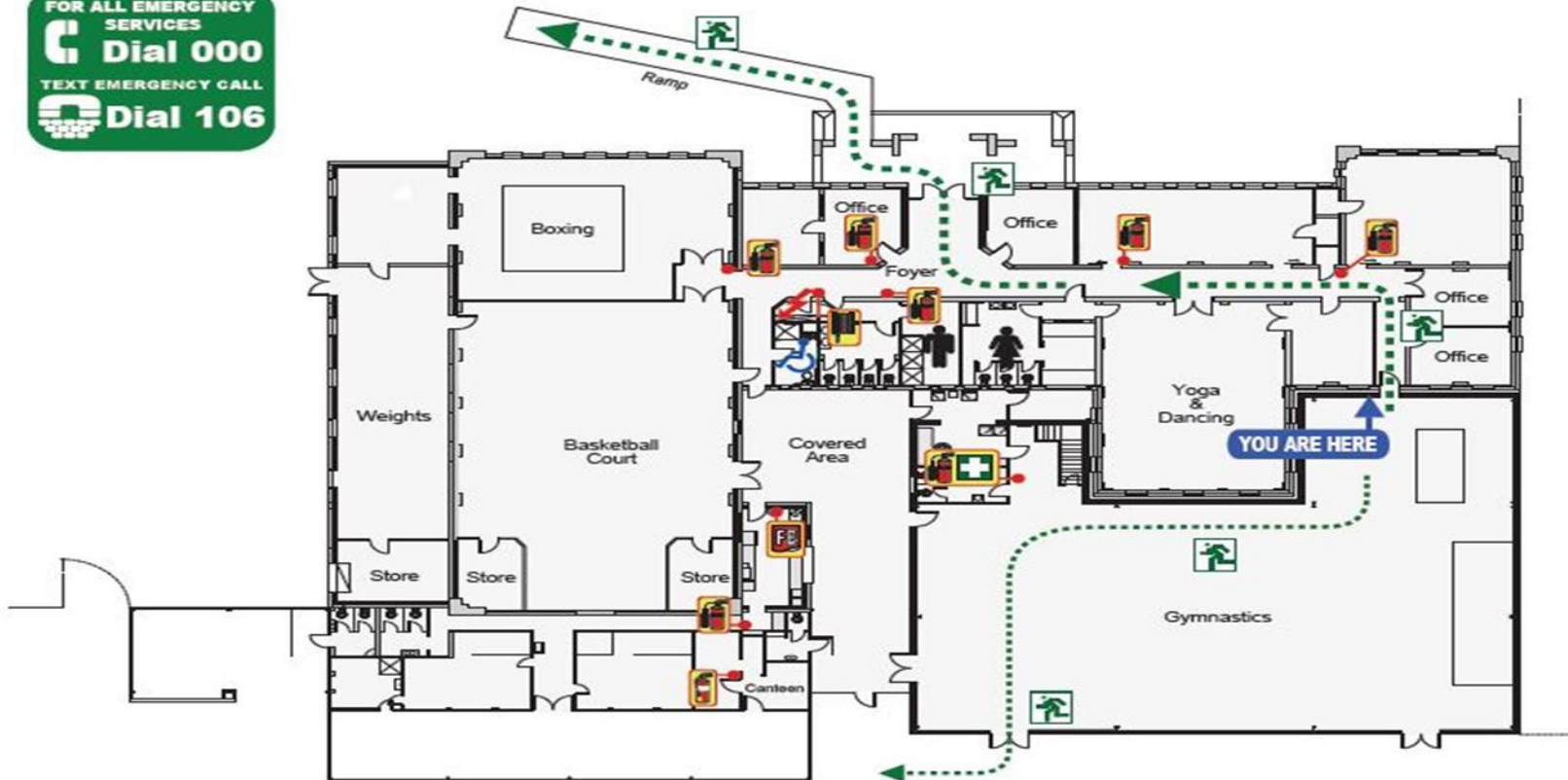
Date updated or reviewed:

Plan reviewed by:



EVACUATION DIAGRAM

FOR ALL EMERGENCY SERVICES
Dial 000
TEXT EMERGENCY CALL
Dial 106



Legend

First Aid Kit

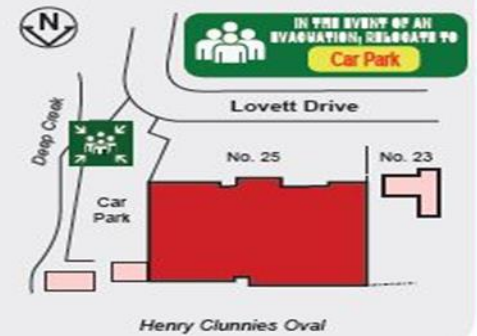
Fire Hose Reel
 Electrical Switchboard

Fire Extinguisher
 Assembly Area

Fire Blanket
 Exit Path

Business Name
25 Lovett Drive
SOMEWHERE NORTH NSW

SITE MAP ASSEMBLY AREA



EMERGENCY PROCEDURES

- R** REMOVE people from the immediate danger.
- A** ALERT all people nearby.
RAISE AN ALARM - DIAL 000
- C** CONFINE the Smoke and Fire, attempt to extinguish the fire if safe and trained to do so.
- E** EVACUATE the building and proceed to the Assembly Area

SAFE EXIT AUSTRALIA
www.safe-exit.com.au



Questions?



February 23, 2024