

OSHA

Most Frequently
Cited Standards
of 2021



10

Machine Guarding

29 CFR 1910.212



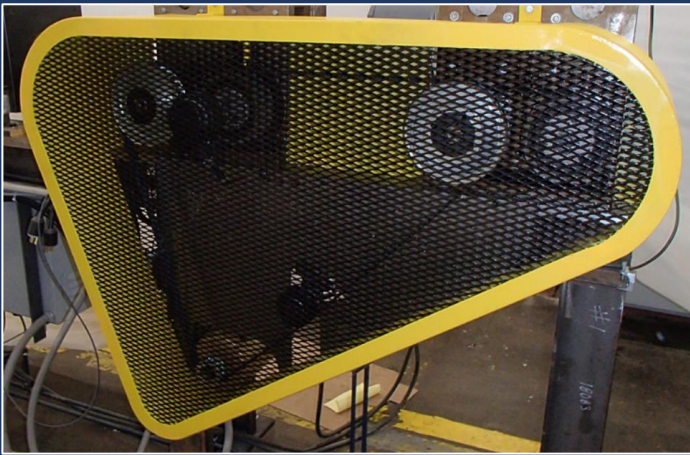
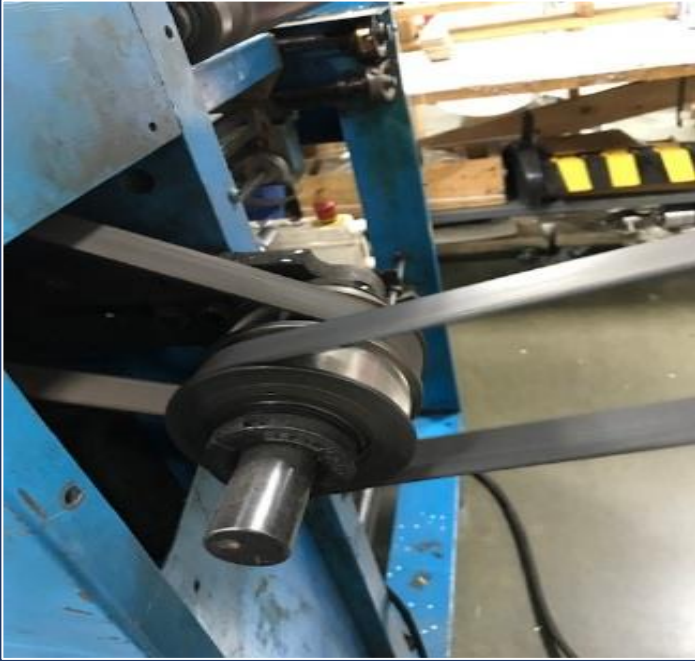
MACHINE GUARDING - DOES IT MOVE?



THINK: You need to prevent contact with moving parts. The guard should prevent an employee from going **OVER, UNDER, THROUGH, AROUND**

The guard needs to keep the employees **OUTA** the machine.

DOES IT MOVE?
If so, cover it



MACHINE GUARDING - BENCH GRINDER



- Work rest gap must be $\frac{1}{8}^{\text{th}}$ of an inch
- Tongue guard gap must be $\frac{1}{4}$ of an inch

9

Powered Industrial Trucks

29 CFR 1910.178



POWERED INDUSTRIAL TRUCKS

Training

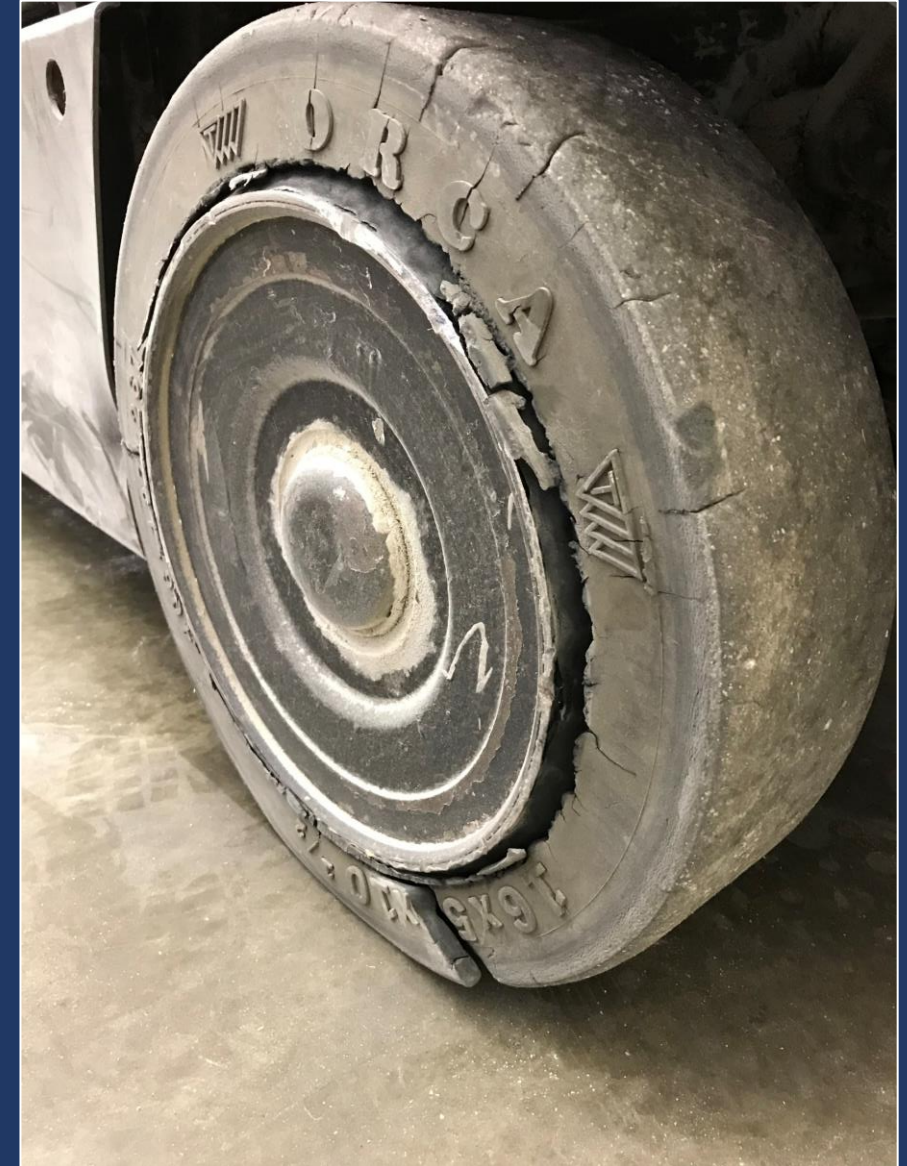
- Initial
- Refresher:
 - Deficiencies observed
 - Accident or near miss
 - Poor evaluation
 - Assigned to a different type of PIT
 - Changes in the workplace
- Evaluate every 3 years
- Certification: name, dates, trainer



POWERED INDUSTRIAL TRUCKS

Daily Inspection

- Daily inspection of PIT before being placed in service
- Shall not be placed in service if the examination shows any condition affecting the safety of the vehicle
- If used on a round-the-clock basis, the PIT shall be examined after each shift



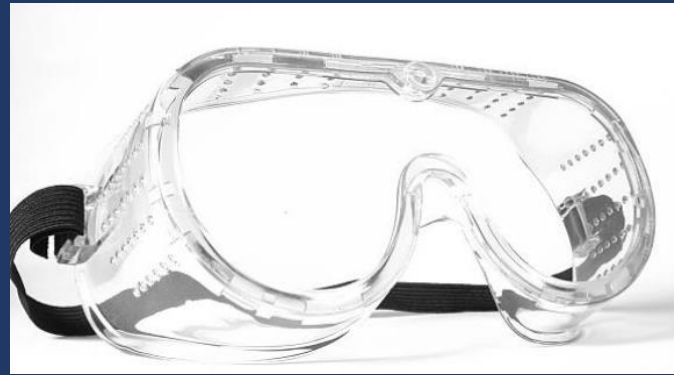
8

Eye and Face Protection

29 CFR 1926.102



Eye Protection



- The employer must identify when eye/face protection must be worn
- Employer must ensure employees wear the correct eye/face protection
- Use the right type of protection for the job!



7

Fall Protection – Training Requirements

29 CFR 1926.503



FALL PROTECTION

Training Requirements



- Initial training:
- Retraining:
- Certified by the employer: written, name, trainer, date

6

Control of Hazardous Energy (LOTO)

29 CFR 1910.147



LOCKOUT/TAGOUT

Energy Control Program

The employer SHALL:

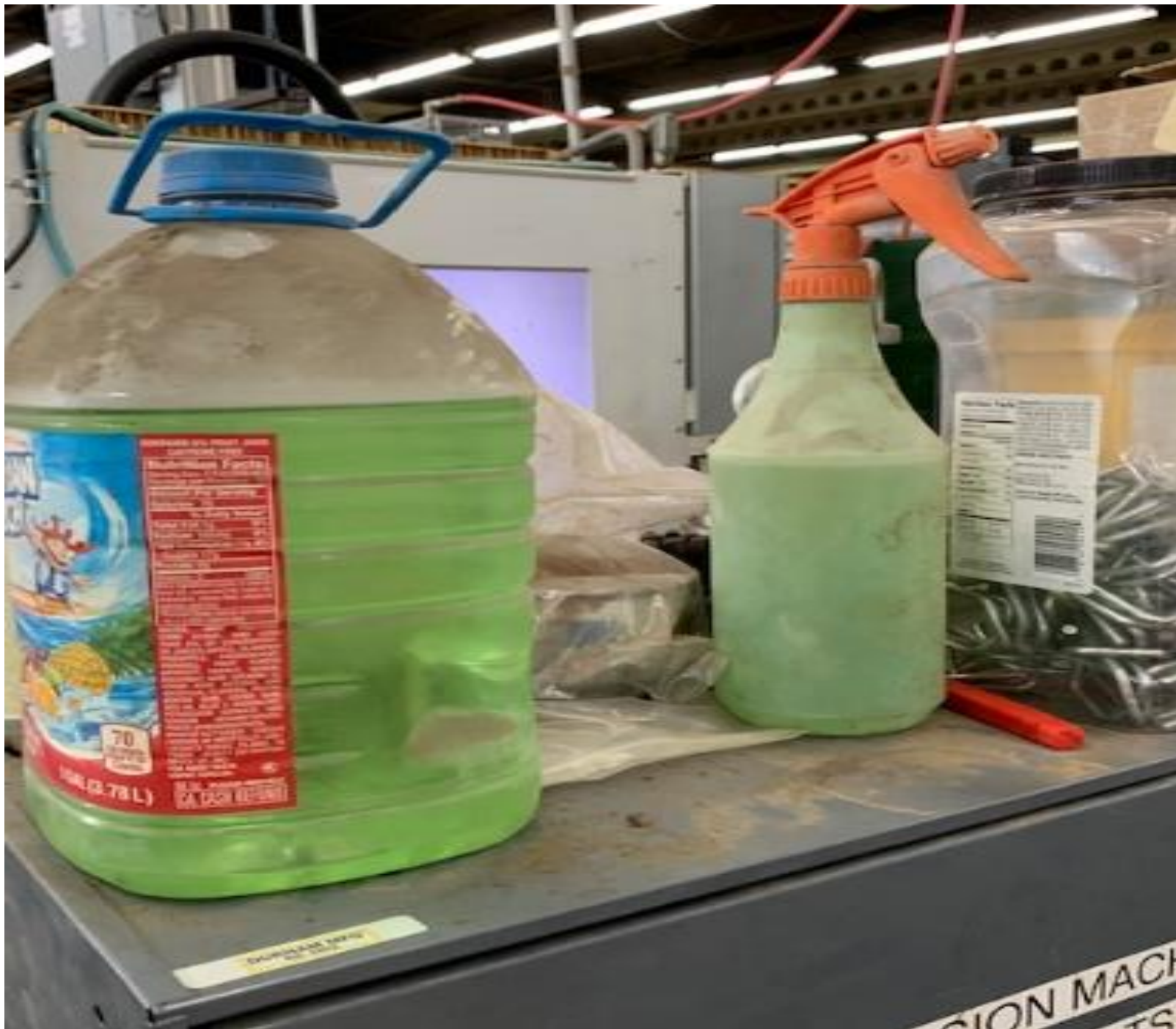
- Establish a program
- Train employees
- Periodically inspect
- To ensure, prior to servicing/maintenance, that energy is isolated to prevent starting or release of energy



5

Hazard Communication

29 CFR 1910.1200



HAZARD COMMUNICATION

5 Elements for a Complete HazCom Program

1. Inventory
2. SDS
3. Labeling
4. Training
 - Initial, new chemical introduced, new hazard, new process
5. Written Program



4

Scaffolding

29 CFR 1926.451



SCAFFOLDING

Fall Protection

Fall Protection for Scaffolding is mandatory at 10ft:

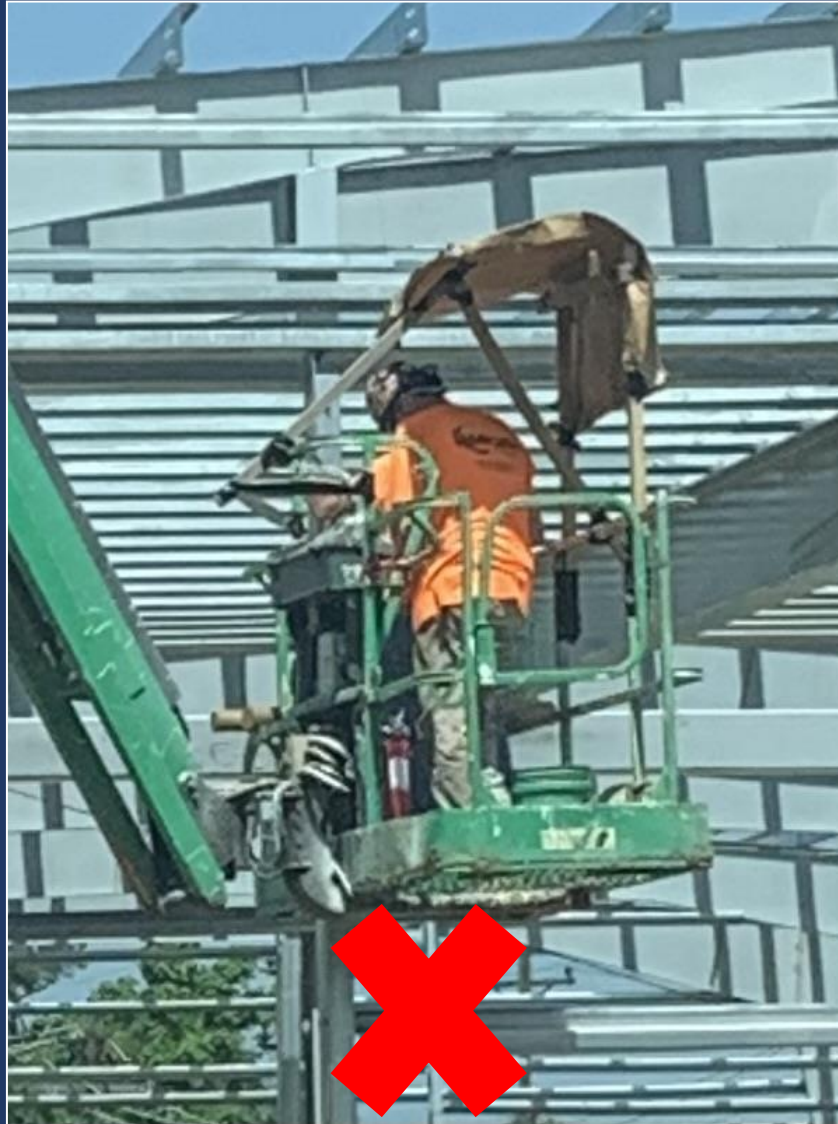
Primary Types of fall protection:

- Guardrail
- Personal Fall Arrest System



SCAFFOLDING

Fall Protection



SCAFFOLDING Fall Protection



3

LADDERS

29 CFR 1926.1053



LADDERS – Improper Use



Unless specifically designed by the manufacturer, step ladders are not designed to be placed against a wall for work



This is as high as you go

LADDERS – Improper Use



LADDERS

Portable Ladders Accessing an Upper Landing



Side rails must extend at least 3ft above the landing if accessing an upper landing such as a roof



2

Respiratory Protection

29 CFR 1910.134



RESPIRATORY PROTECTION

Medical Evaluation

1. Identify the hazards
2. Select the respirator
3. Medical Evaluation
4. Training
5. Fit testing
6. Written program and Recordkeeping



RESPIRATORY PROTECTION Written Program

Hazard Communication Program



Driver Safety Policy



First Aid Program



Emergency Action Program



Personal Protective Equipment (PPE) Program



Respiratory Protection Program



Bloodborne Pathogens Program



Lock Out Tag Out Program



Powered Industrial Truck Program



Accident Analysis Program



Fall Protection Program



Ergonomic Safe Patient Handling Program



Fire Prevention Program



Welding, Cutting, Brazing, Hot Work Program



Confined Space and Permit Required Confined Space Program



Fire Extinguisher Program



Respiratory Protection Program



- [Sample Written Respiratory Protection Template \(Word .docx\)](#)
- [Respiratory Protection Resource Document \(Word .docx\)](#)
- [Definitions \(Word .docx\)](#)
- [Attachment A Respiratory Hazard Assessment \(Word .docx\)](#)
- [Attachment B Medical Questionnaire \(Word .docx\)](#)
- [Attachment C Medical Release \(Word .docx\)](#)
- [Attachment D Fit Test Results \(Word .docx\)](#)
- [Attachment E Voluntary Use \(Word .docx\)](#)
- [Attachment F IDLH Locations \(Word .docx\)](#)
- [Attachment G Respirator Maintenance Inspection Checklist \(Word .docx\)](#)
- [Attachment H Respirator Filter Change Schedule \(Word .docx\)](#)
- [Attachment I Training Sign-in Sheet \(Word .docx\)](#)
- [Attachment J Program Evaluation \(Word .docx\)](#)

1

Fall Protection

29 CFR 1926.501



FALL PROTECTION

3 Primary Types of Fall Protection:

1. Guardrail
2. Personal Fall Arrest System
3. Safety Net

